

Victoria Terra Gardens

A Memorial for the celebration of Humankind

The government want to create an immersive space that is recognised worldwide as a must go and experience space, making an impact in the heart of London. It should be a statement that celebrates humankind, diversity and the individual, challenging persecution and inequality and inspiring hope..

The location of this memorial is within Victoria Tower Garden adjacent to the Houses of Parliament and the Thames, right in the heart of our democracy. Through this project we are demonstrating our country's commitment to the victims worldwide, past and present, persecution and inequality while reflecting a sense of hope and future within a design.

It is an opportunity to communicate the importance of standing up to persecution and inequality and the ineffable human and cultural loss to us all – while affirming the UK's resolve to stand up against intolerance and prejudice, and to be an empathetic society that respects and embraces difference.

Producing a design response to this challenge should include an underground building for an inside museum/ space for art and community projects for the victims worldwide, past and present, persecution and inequality. The design creation should be a place to remember, grieve, celebrate for everyone, creating a pivotal world centre that registers a new future or world order that acknowledges aspects of our human history that deserve a measure of contemplation and understanding, and that recognises a brighter future based on the idea of 'Hope' and 'Resolution'.

WORLD CENTRE FOR HUMAN KIND

MARTIN DONNELLY





Aerial view, London surround.



Path on the east side, tree line and the Thames



Flat open grass

Site Users

30 million visitors to London from other countries each and every year.

- High population density
- Diverse city
- 100s of languages and dialects spoken

Nearest station: Westminster Station- North of site (Accessible from District, Circle and Jubilee lines).

Current site uses

- Eating/ Drinking
- Picnics
- Meeting
- Work/ Business lunch breaks
- News reporting

Heritage

Victoria Tower Gardens is Grade II listed on the English Heritage Register of Parks and Gardens. This covers the hard and soft landscaping, as well as the established trees. Victoria Tower Gardens also contains three listed structures: The Burghers of Calais (Grade I); the Statue of Emmeline Pankhurst (Grade II); and the Buxton Memorial (Grade II*). Victoria Tower Gardens also sits within a significant heritage context, including the buffer zone of the World Heritage Site of the Palace of Westminster, and the Westminster Abbey and Parliament Square Conservation Area. A number of important view corridors exist to the Palace of Westminster and Westminster Abbey through Victoria Tower Gardens. These should not be affected by the sitting or height and form of the Memorial.



- Office and businesses
- Greenspace
- Tourism and recreation
- Political activity

Opportunities and constraints

- News reporting taking place in the site.
- Maintaining at least some views to Westminster.
- +St James' park and Vincent square nearby green space
- +Create a entrance and exit for the below ground building that adds to the story of the design.
- +Its triangular shape and trees creates an opening out perspective or a closing in one.
- +The Thames to the east creates good views and could determine nice seating area.

- +Westminster towers above the garden to the north. This has connotations to power, democracy and can create a dramatic backdrop from the site
- +Heavy pedestrian traffic from north of site, means this can be used to create directed journey or experience.
- +Offer more in the way of vegetation species to boost natural habitats and biodiversity in the area.
- +Ability to build down, change heights and levels

Key

- Potential underground building location
- Park area
- Important Viewpoints
- Memorial
- Bus St
- London Plane Trees
- Site entrances
- Site photo marker

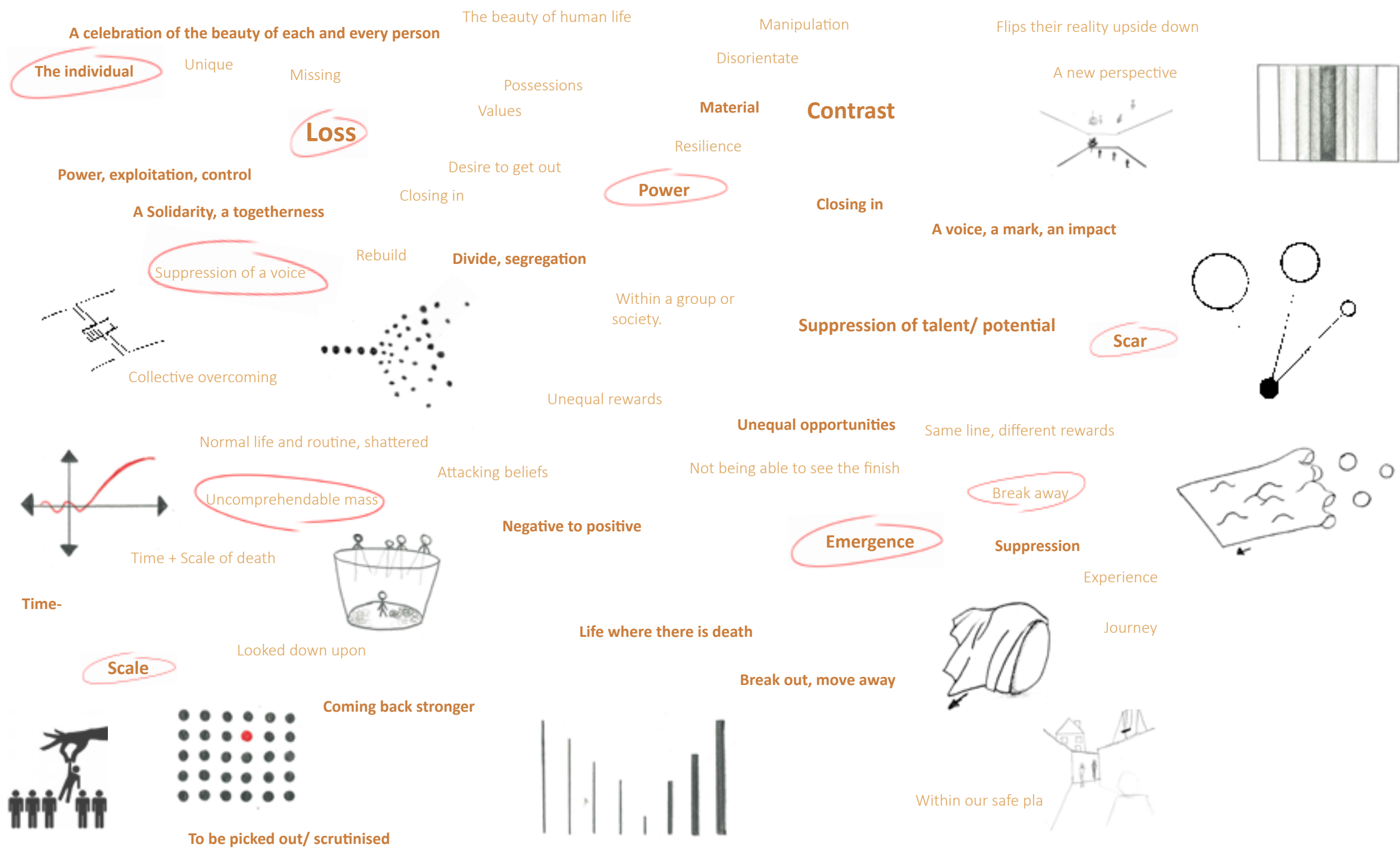
Intent:

The site is flat, centrally located in London, and surrounded by tourist, business and political building uses. It has the opportunity to be the site of something incredible that is a worldwide statement to present the UK's stance against inequality and persecution and inspire people of all cultures, as well as offer a place for people to relax within.



Inequality, persecution and Hope

Although designing around the three; 'Inequality, persecution and hope' it is hard to pull the three apart and interrogate them as their own separate entities. The three intertwine within one another, for when there is inequality and persecution, there will often be hope. This page is a brief collection of some of the exploration done in building up ideas. Drawn symbols and words, poetry, and models within this page create a web of thoughts and springboards for ideas. It starts to show this idea of divide of the individual within inequality, to more physical control and manipulation within persecution, and then hope being this escape, or overcoming, where we break away from suppression.



Suppression

Enclosed within,
You deny us of our liberty,
and now we have no say.

We will resalvage our identity
And we will break away.

Emergence

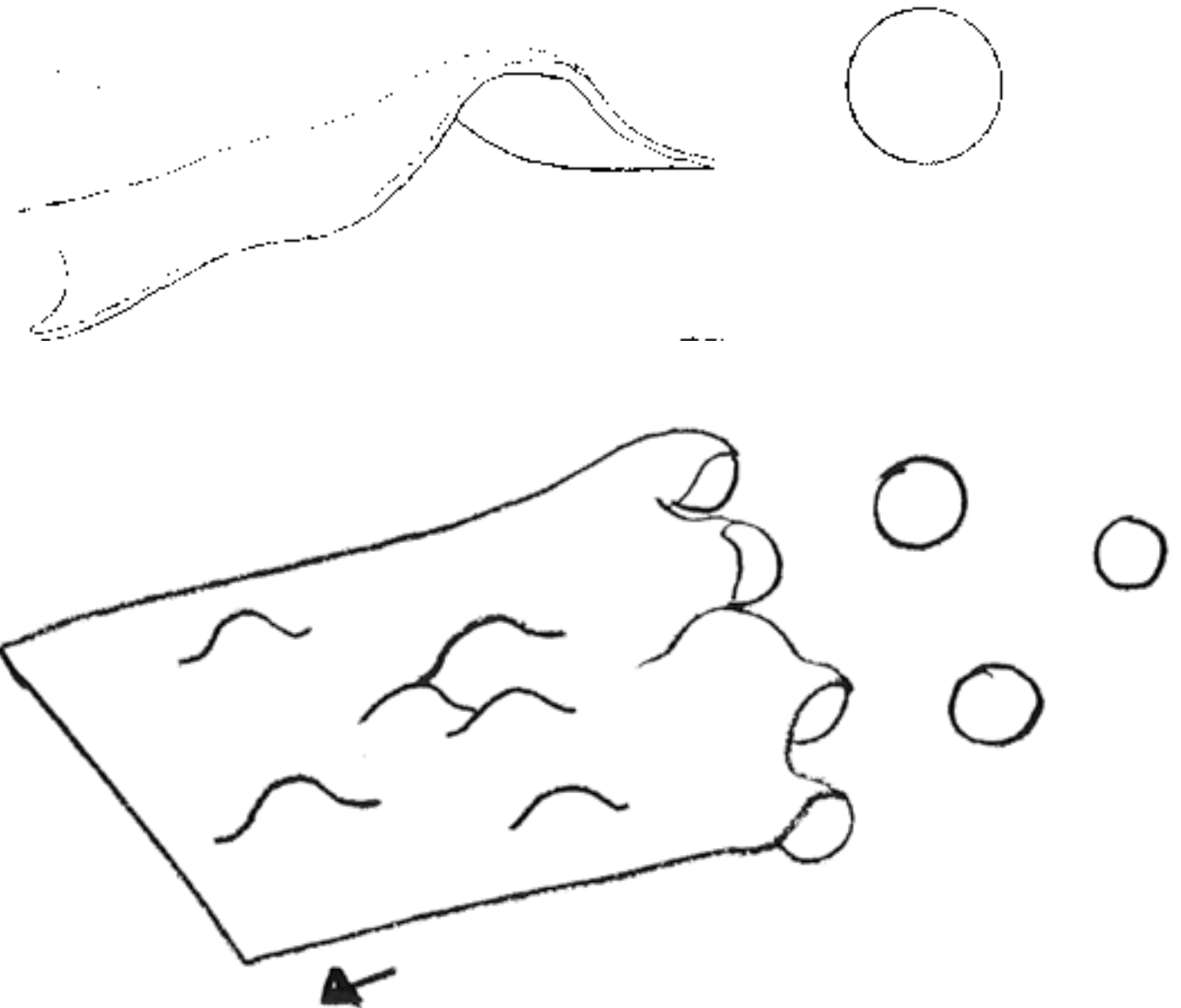
Defined as the process of becoming visible after being concealed. Breaking through, away from the suppression of persecution and inequality. This idea is beginning to shape the driving force of this project.

Explosions of light and beautiful shapes and forms from rough beginnings.

Emergence expresses progression, moving forward from persecution. It moves us out from the suppression, being enclosed within, being denied of liberty, or having no say to the light.

◀ The maquette presents the concept of suppression and emergence. Black fabric is placed and glued onto some metallic looking balls placed onto a wooden board. The fabric covers and almost encloses some of these balls- symbols of individuals? Cultures? Moments of persecution or inequality? which then begin to break away, out of this hold that it appears the fabric has on them. What does the maquette look like on a tilt? An up hill struggle of escape, bravery, overcoming this persecution? These balls rolling out the grasp of persecution? This fabric of persecution chasing the balls? Acceleration as these balls have overcome the suppression of persecution and now start to roll forward to their bright futures.

◀ This maquette expresses emergence through this wooden structure almost breaking up through the floor. It emerges through the black fabric tearing its way into the light. Lighting can be added through a hole in the model allowing light to come up through the cracks that the block has made. Perhaps this can be transferred into a design incorporating up-lighting. It helps define the sides of the block and gives an aesthetically positive finish. The maquette also helps represent this idea of beauty and form emerging from the suppression and breaking away. Individuals or groups unique bright nature and personality shining through.



Manifesto

What is it to be persecuted or a victim of inequality? What is the feeling of being manipulated, moved by a kind of hold, that sometimes cannot even be seen. Our paths, choices dictated by others. Our views dictated by a power, but not ourselves.

And what is the feeling of regaining this liberty, this freedom? The emergence from the darkness, the weight of them being removed?

Design should evoke this feeling of being controlled or enclosed by persecution or inequality while also expressing the feelings of hope and emergence.

I believe it is a duty to give a voice or mark to the victims worldwide, of past and present persecution and inequality. This space should captivate and excite, be a place that takes a stand against the wrongs of the past, highlight the present issues, celebrate diversity and the beauty of every individual and leave visitors hopeful and inspired to make the world more understanding and compassionate to others as they leave to their homes or continue touring London.



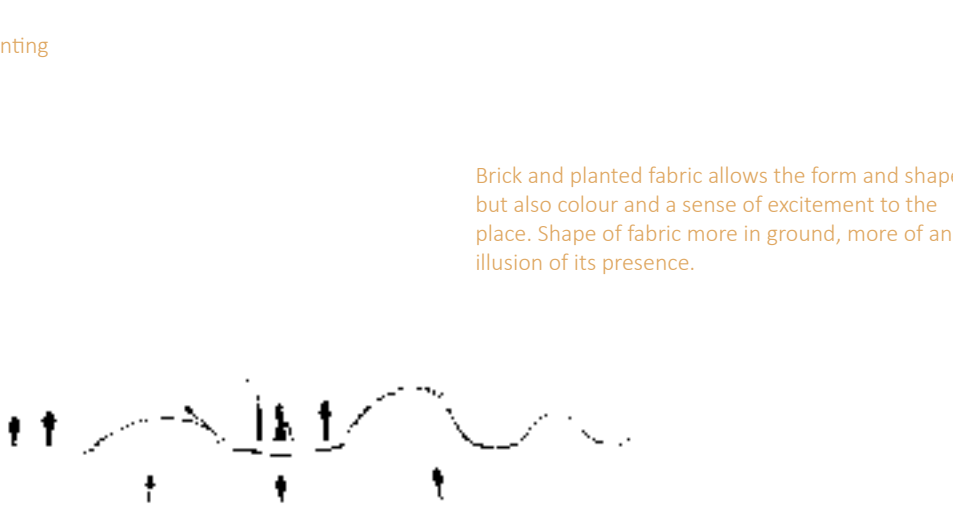
Sketching Development



Paths and routes between the balls. Either under or over the fabric/ layer of suppression. Beneath paths may need skylights for light

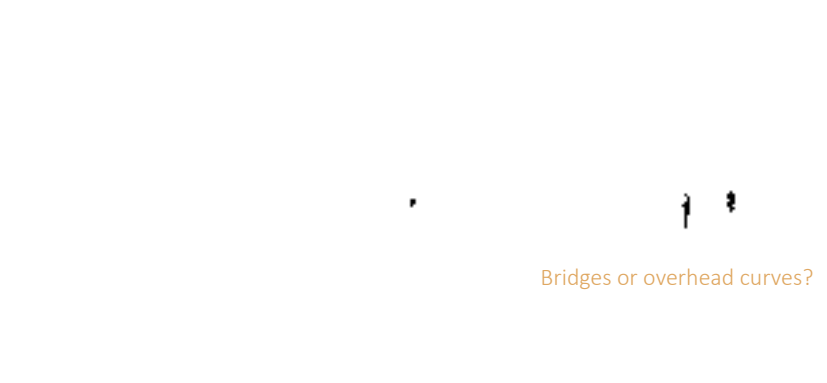
Shape of the curves

Curves and drops experimenting



Brick and planted fabric allows the form and shape but also colour and a sense of excitement to the place. Shape of fabric more in ground, more of an illusion of its presence.

Creation of gaps and tunnels. Potential for interesting paths or spaces?



Bridges or overhead curves?

Entrance points? Buxton memorial?



Variety of shape and curve trials.



Holes where the ball has emerged from

Shape, form, entrances, under over. Exciting space creation



Walking above fabric. Bridges?



Sink the balls? Compressed through the weight of suppression?



Sunk balls seem to lack that power of emergence. Maybe sink the ones compressed under sheet?



Fabric tearing across and over people even in open areas?

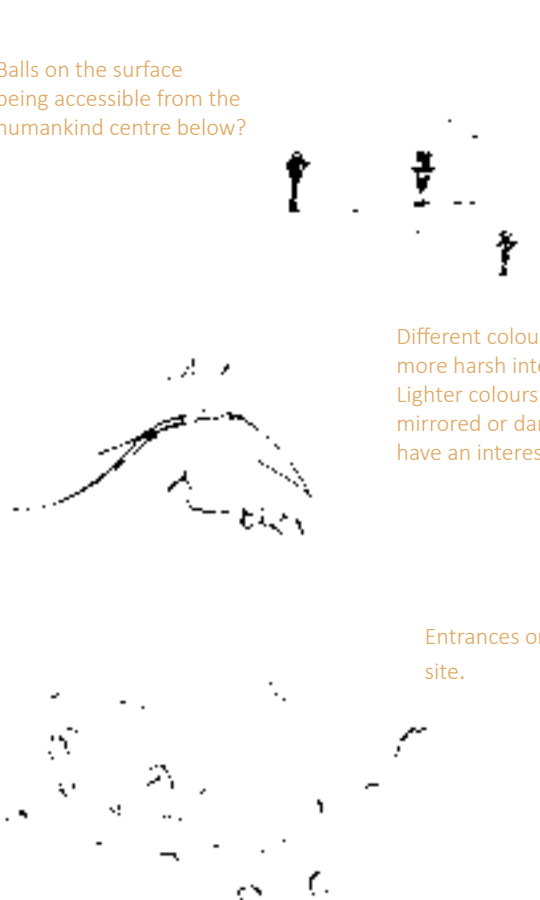


What shapes are successful and which are not?

Paving, vegetation, rope? Connecting the spheres to one another maybe?



Ground level on site. Curving up to cater for building. Down and up bumps like rolling hills through the site. two high points creates this journey under the sheet that opens out in the central space an this beautiful open landscape.



Balls on the surface being accessible from the humankind centre below?

Different colour choices. Black a more harsh intense colour below. Lighter colours like white above. Silver mirrored or dark glass finishes could have an interesting look.

Entrances or paths around the site.

Being under the curve you lose sight of sky and begin to feel slightly closed in or controlled. View becomes more narrowed and hopeful to the distance.

Fake shadow by balls? Vegetated areas creating space to sit. Could be a line or a path from behind the balls to give appearance of movement.



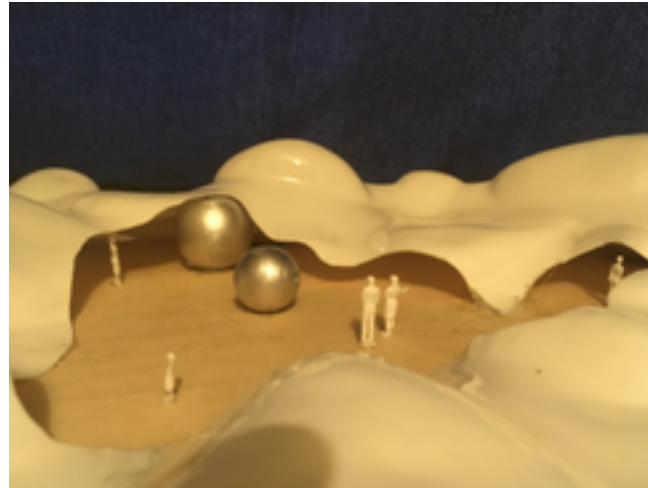
Ball entranceway?



Concept Model

The concept model creates a 3D version of the concept. This plastic 'fabric' of persecution creates the main part of the idea. It appears to almost have this grasp on some of the balls as its curves and swings through the site. Its form creates entrances, tunnels and open spaces from all sides, which allow for access from all sides of the site. The emerging balls and people within the site give the design movement and are integral to this emergence concept. Potential building entrances are formed through the curves where no ball is placed anymore, perhaps has already emerged? These entrances accessed when a person moves under and into the fabric of persecution. Perhaps there are many entrances and exits in this case? Entering in one place of the fabric and getting lost and disorientated within the chaos of persecution, but then emerging back into light somewhere else.

I believe this concept, shape and form is the springboard for the design going forward. It presents the basic idea behind the project and a potential form and shape that creates both static and dynamic spaces, as well as being a very exciting visual design.

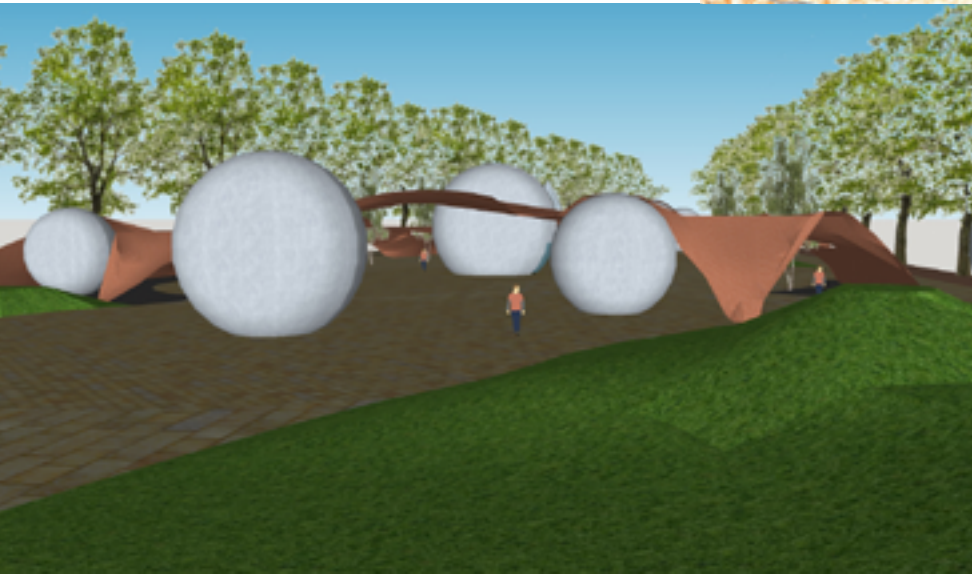
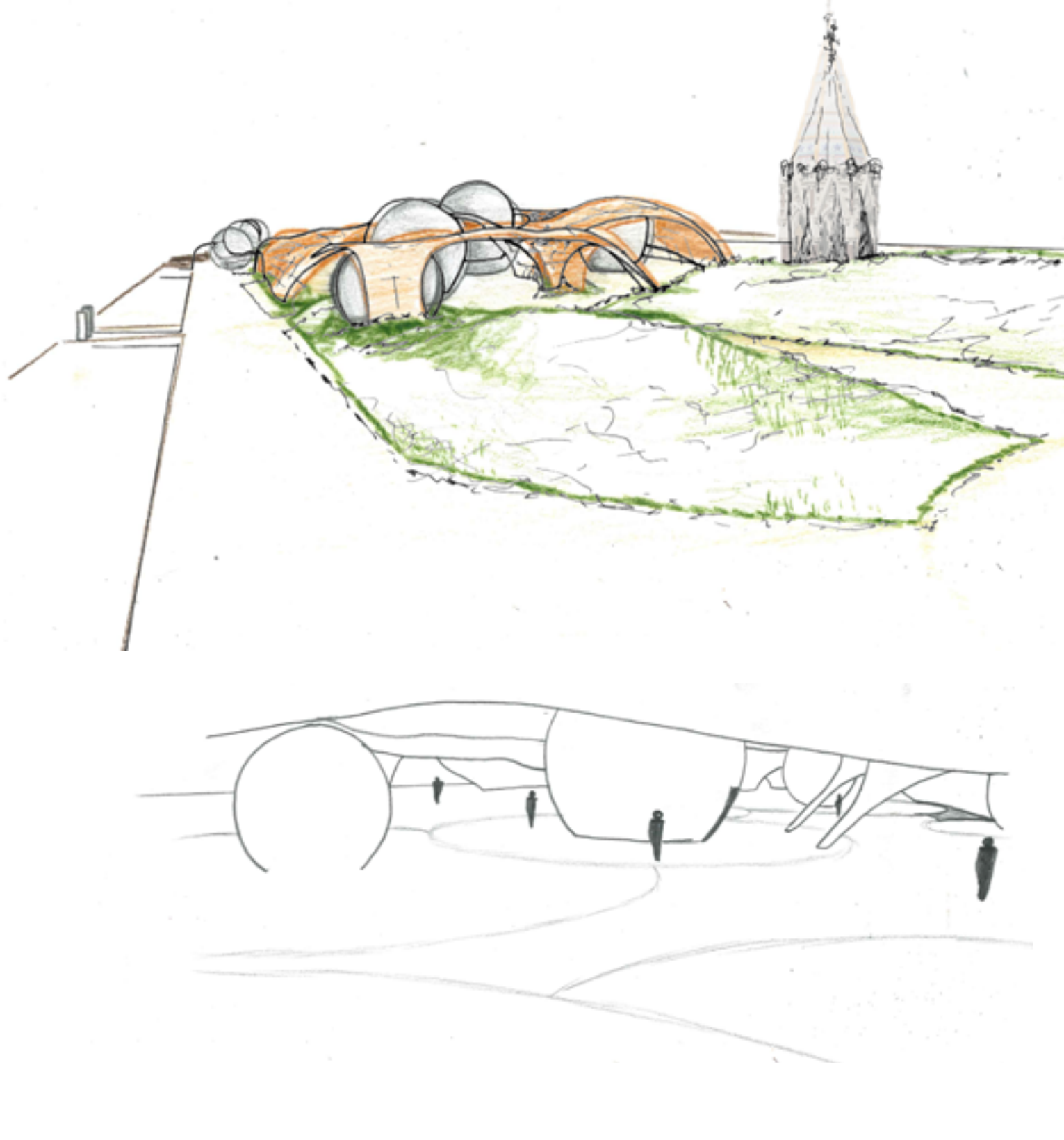
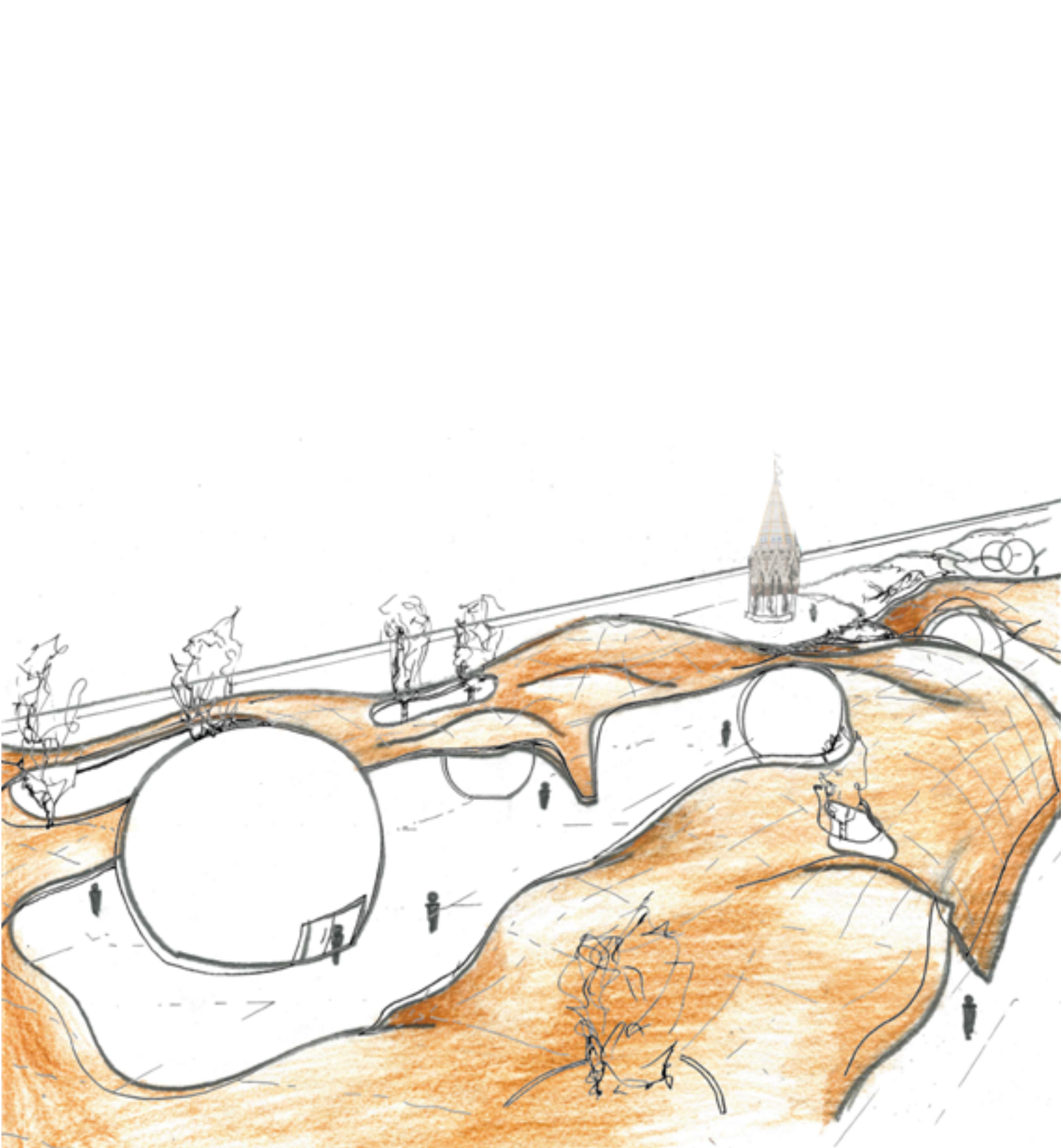
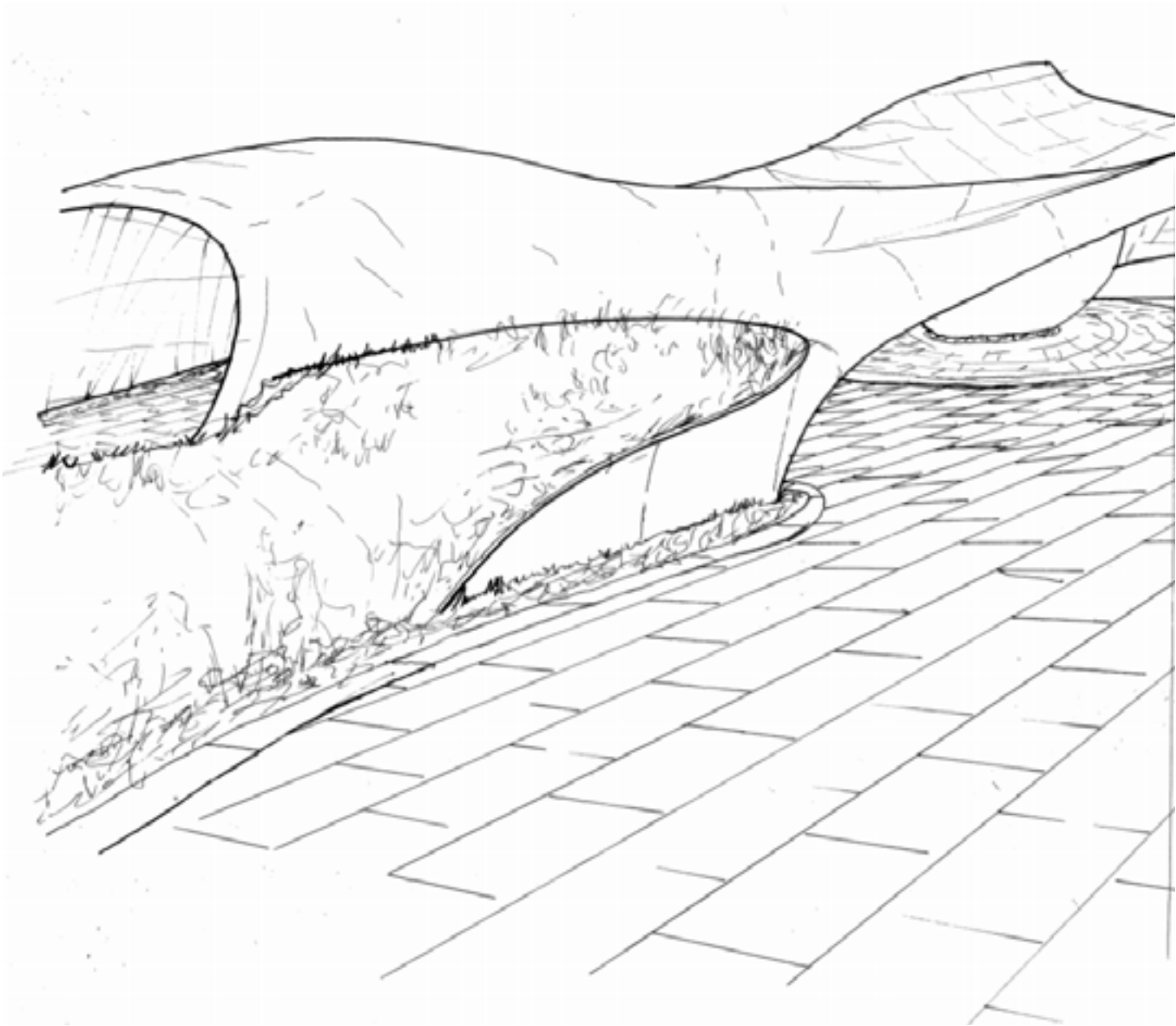


Vision

What is it to be persecuted or a victim of inequality? What is the feeling of being manipulated, moved by a kind of hold, that sometimes cannot even be seen. Our paths, choices dictated by others. Our views dictated by a power, but not ourselves.

The design's main aspect is a large physical structure that looks almost as if a large piece of soft fabric was dropped upon to the site and then froze there, containing what laid beneath it. Its creases and wrinkles shaping its form. This structure controls the space, the large spheres and those within it, dictating routes, paths and spaces. The spheres, beautiful, impressive and unique in nature will sit within the fabric breaking away from this suppression. Each one creating individual areas and zones within the place for reflection, admiration and awe.

This constant change in space from more tight enclosed under the fabric, to emerging out into bright open spaces will be an incredible experience for the people who visit this site right in the heart of London. It will be exciting, thought provoking, and definitely one that will stay with you. The design is centred around the idea of the stranglehold and suppression caused by persecution and inequality on groups, cultures and the single individual throughout the past and present.



Horseferry Playground will remain within the area. A fun interactive area for children to play.

Grass mounds offer a place of relaxation

Building entrance sphere. Larger than the other spheres featuring two sliding doors as entrances and exits where you then spiral down stairs or down a lift below to the underground building memorial

Sphere area of rest and contemplation after the journey through the site

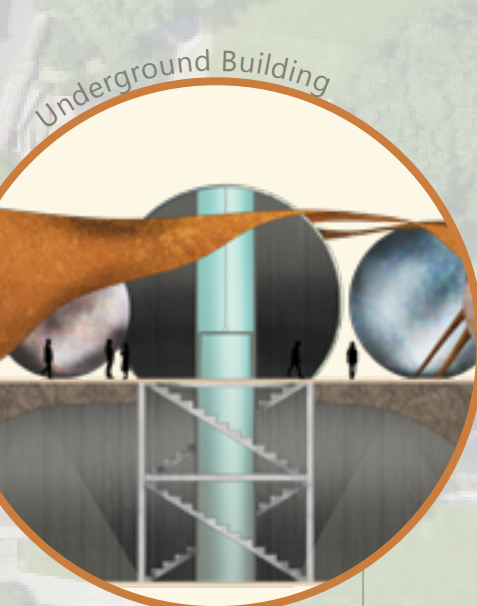
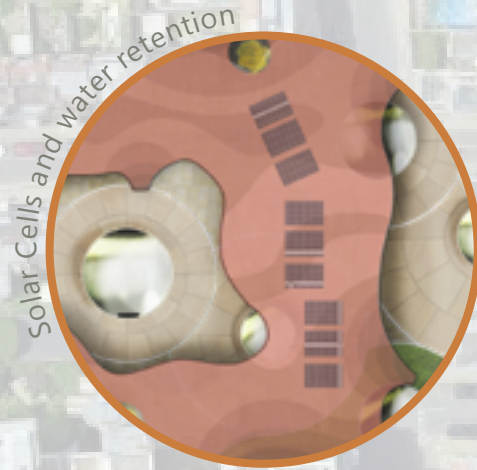
Benches and the circle paving create a zone of rest, respect and appreciation of the Buxton memorial

The structure can collect rain water that lands upon it which can be used within the building below

Gaps within the fabric allow silver birch trees to emerge through breaking from the hold of the fabric

The Burghers of Calais given their own large circular space and dropped back to ground level, people may make links between their and the spheres placement

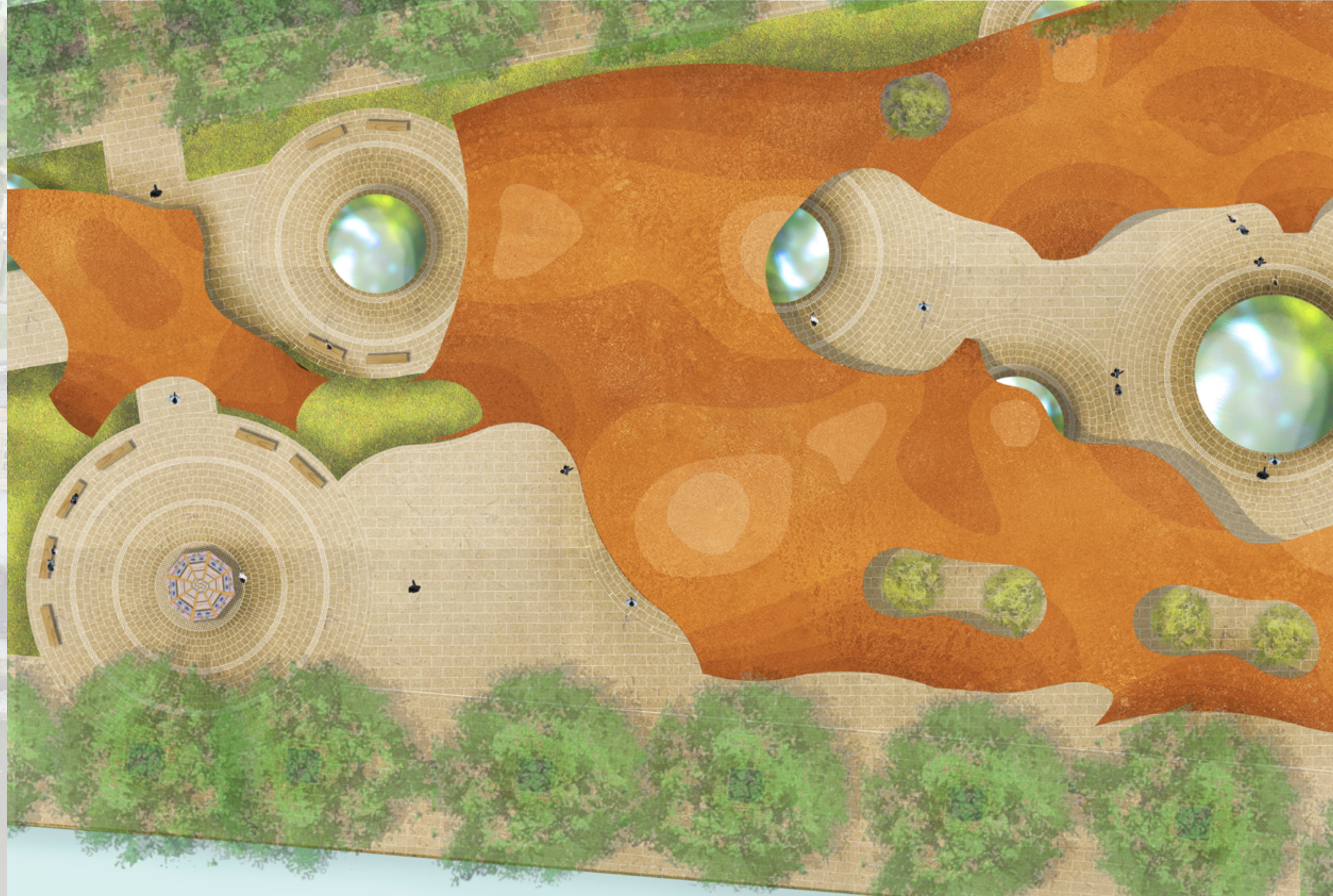
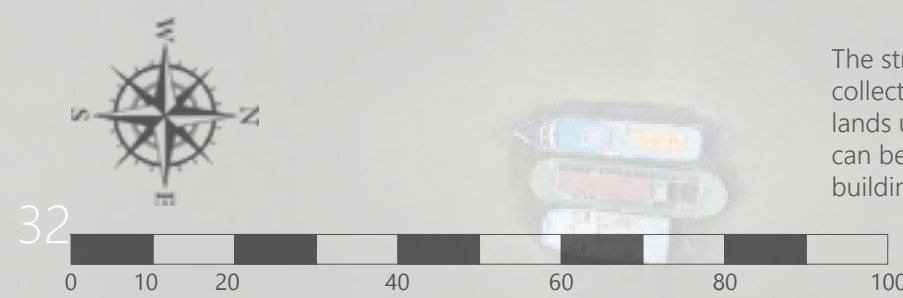
Current part of the site remains as a nice bench that looks towards the memorial. A place to go maybe after or before visiting to contemplate?



Solar Cells on the top of the structure can generate power for the building below ground and lights around the site

Large spheres emerged from the fabric on the mounds may hint at the power of culture and individuals as they almost appear to break away and manipulate the form of the mounds

Utilising the current site entrance except widening the path and opening the small gates that act as the gateway into the site. The path then opens out into the site towards the structure





Path along west of the structure towards Westminster

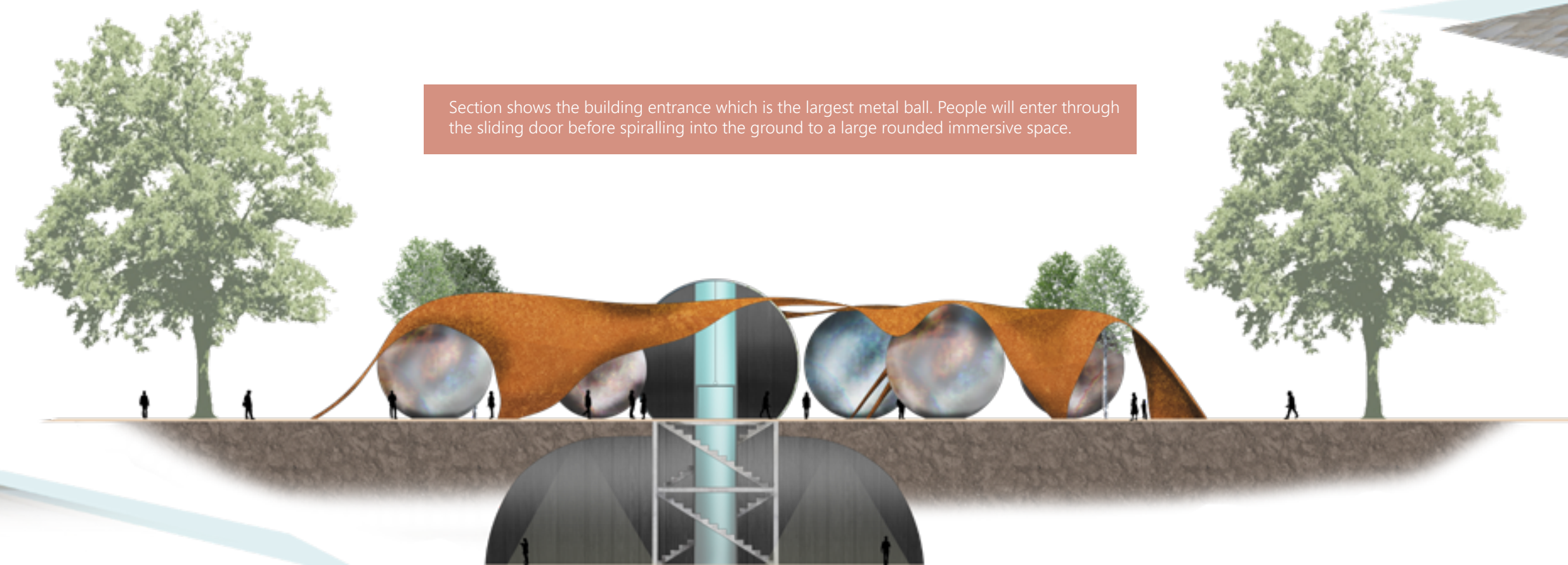
People walk beneath the London plane trees along the Thames and journey between the grass mounds towards the fabric structure and memorial. Westminster sits upon the fabric in the distance.



People enjoying sitting on the grass mounds in the sun, walking amongst the burghers of Calais and the fabric of persecution in the background.

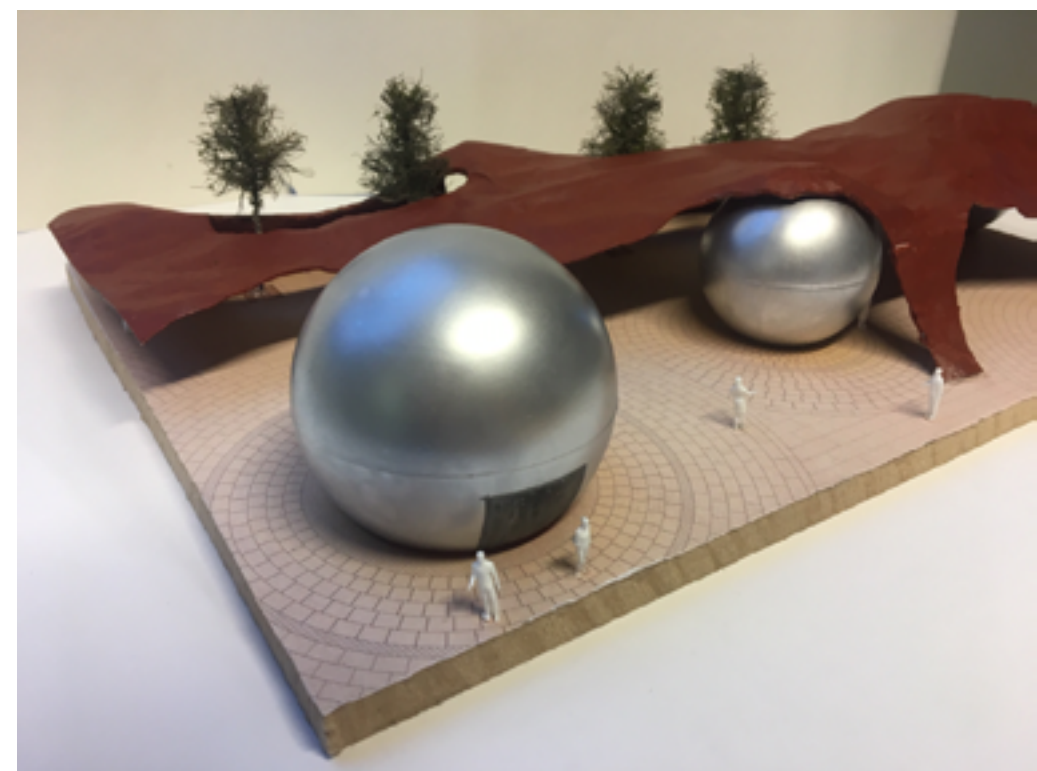
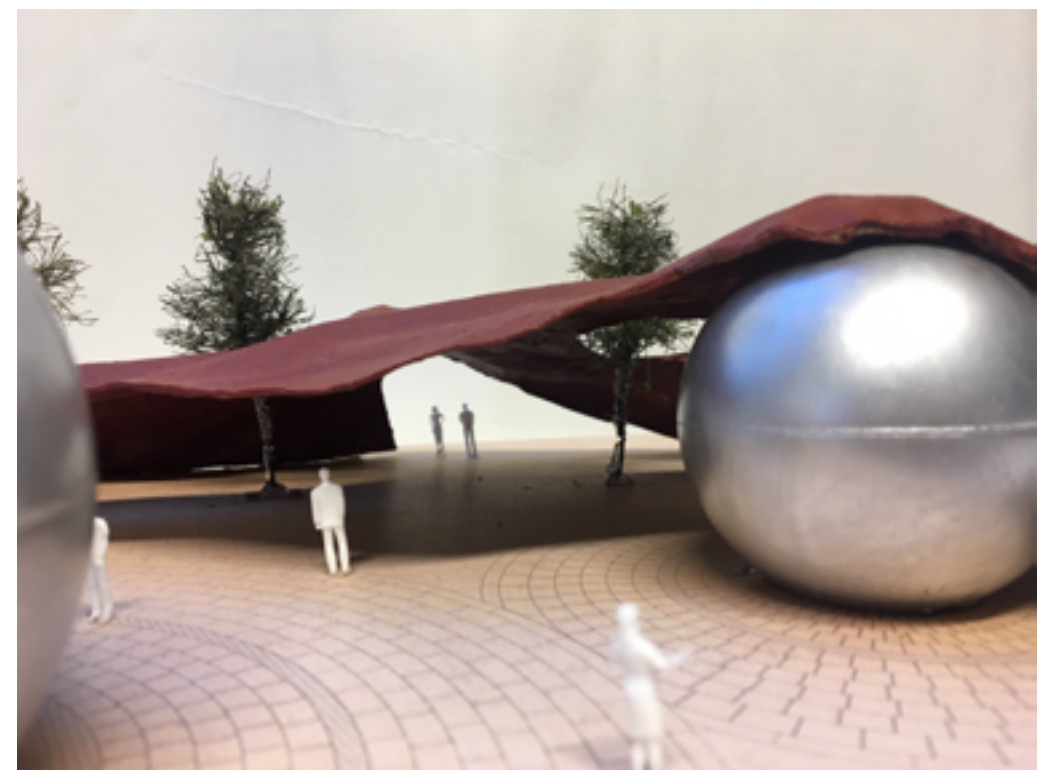
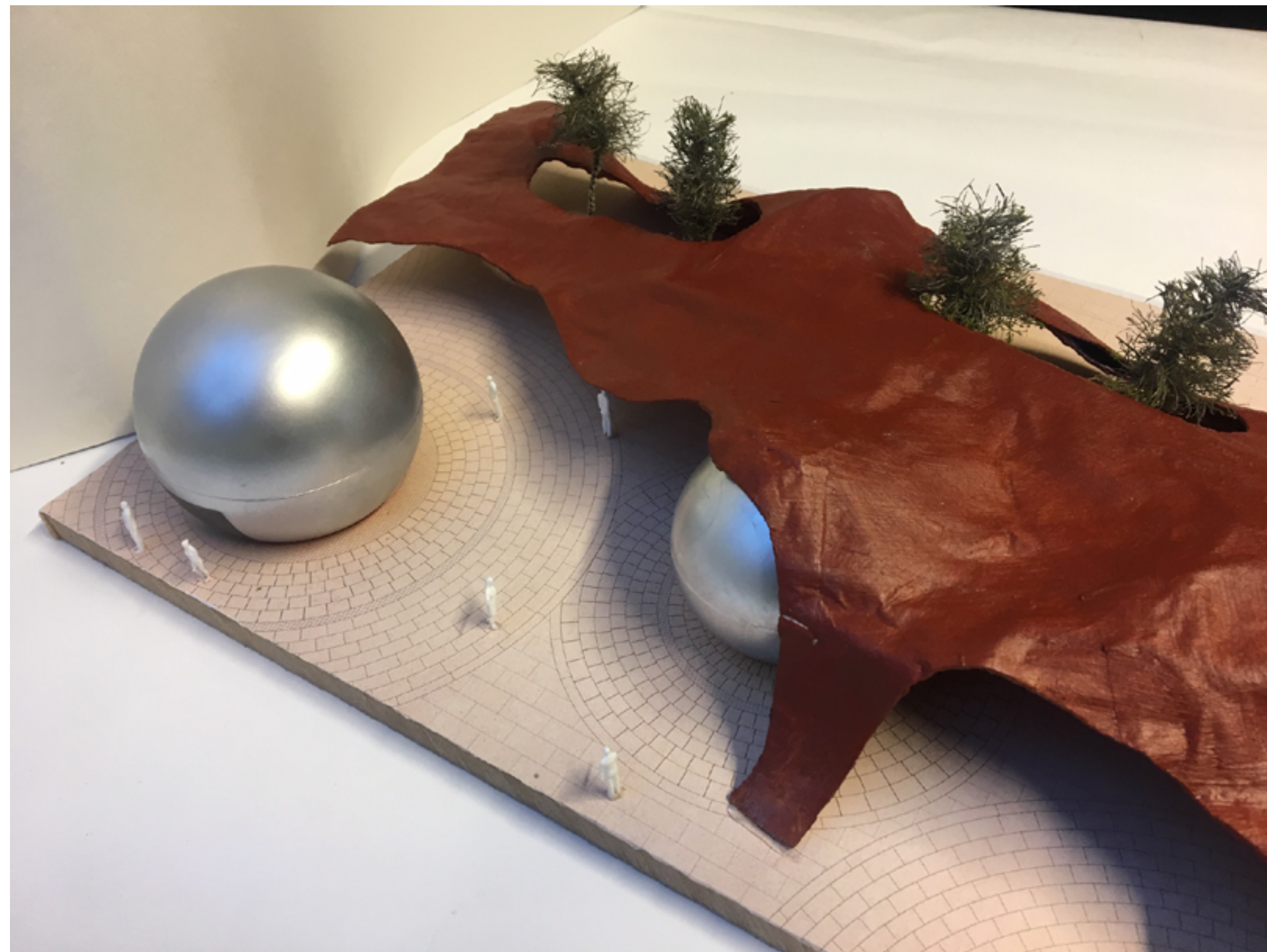
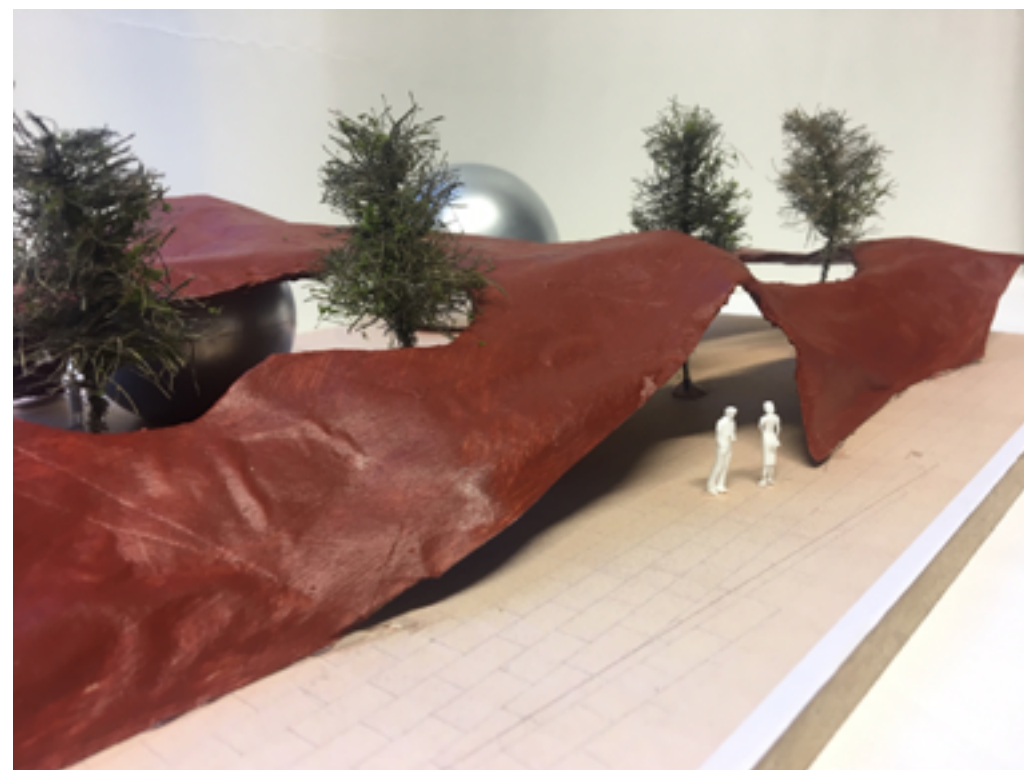


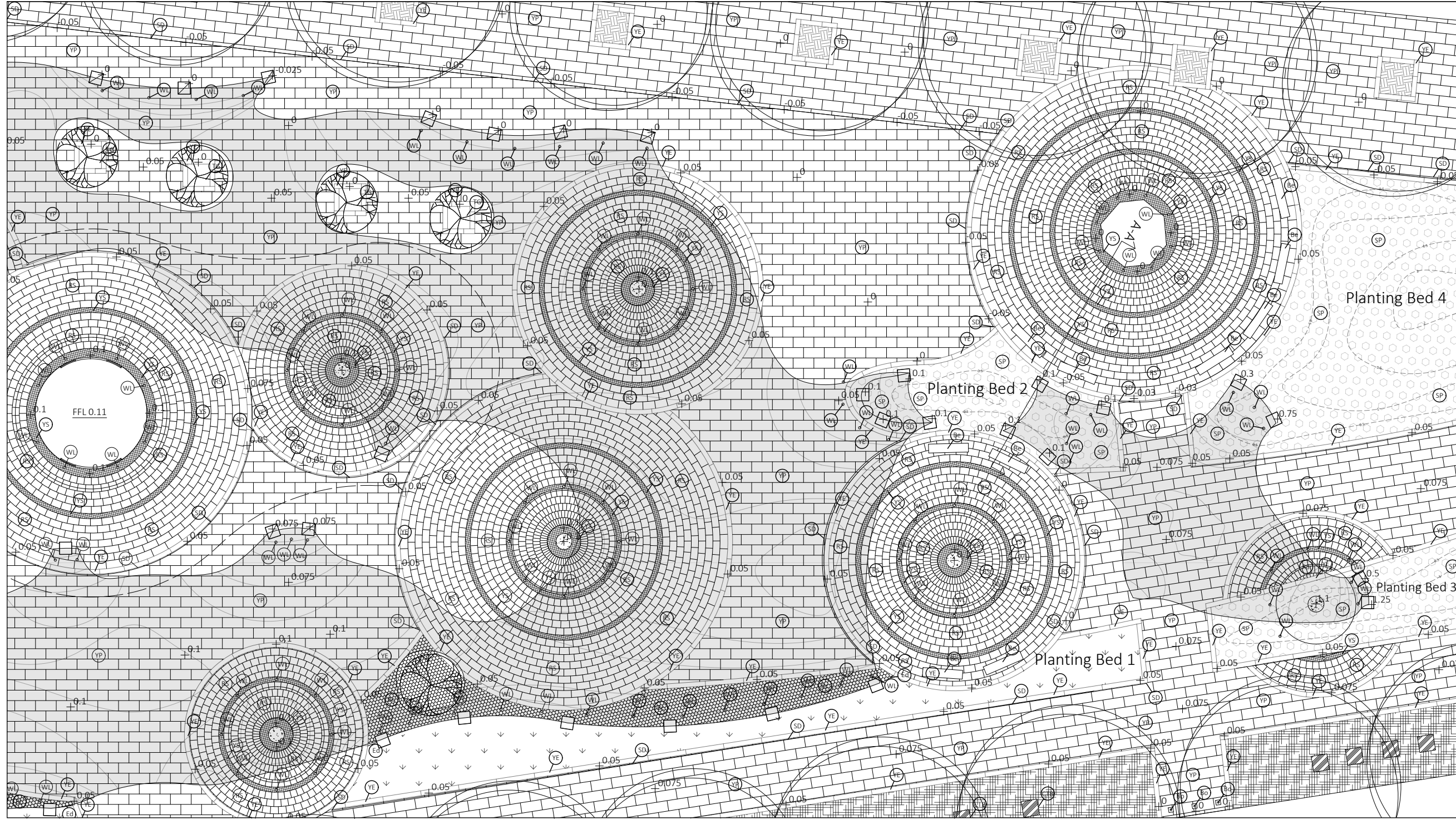
Beneath the fabric, trees breaking through, as well as people walking towards the building entrance. Uplighting defines and lights up the shape of the structure.



Section shows the building entrance which is the largest metal ball. People will enter through the sliding door before spiralling into the ground to a large rounded immersive space.

Model





- SD** Drenix Slot Drain duo
Material: Slot Drain
Manufacturer: Marshalls
Dimensions: 1000x500 x 160 x 170 mm
Finish: Galvanneal Steel slot
Laying pattern: Top of the Slot Drain should be 5mm below the finished pavement surface.
Joining: Sealing of joints the use of M-Seal or M-Flex into rebate.
Sub-base: The two outfall parts are lowered onto 150mm concrete base and sealed.
- YS** Scalamoor Yorkstone setts
Material: Yorkstone
Manufacturer: Marshalls
Dimensions: 100x100x100
Finish: Flamed
Laying pattern: Stalk
Joining: 8mm mortar jointing
Sub-base: 30mm 3:1 mortar bedding, 150mm reinforced concrete base, 200mm compacted MOT Type 1 aggregate
- Bo** 114/900 Retractable BOLLARD
Material: Stainless Steel
Manufacturer: KITS Access
Dimensions: 900mm x 114mm diameter
Finish: Black
Sub-base: 500mm concrete foundation

- TG** Imperial G1 Series Cast Iron Tree Grille
Material: Ductile cast iron
Manufacturer: Marshalls
Dimensions: 1400 x 1400mm with 600mm Aperture
Finish: Anti-Slip 1000
Laying pattern: Main frame of tree grille to be fixed into 200mm deep concrete base with a 100x50mm fixing bolt.
- Ed** CORTEN Edging
Material: Steel
Manufacturer: www.bentley.co.uk
Dimensions: H: 150x 250x 3mm
Top edge bevel thickness: 3mm
Finish: CORTEN 141016
Joining: 20mm flange stake 120mm apart
Sub-base: 30mm Sharp Sand and cement bedding 150mm compacted MOT Type 1 aggregate
- WL** Block 696 In-ground LED Luminaire Well Light
Material: Natural Stainless Steel
Manufacturer: Eaton Lighting Solutions
Dimensions: 150mm Diameter
Finish: Brushed
Sub-base: 200mm reinforced concrete base

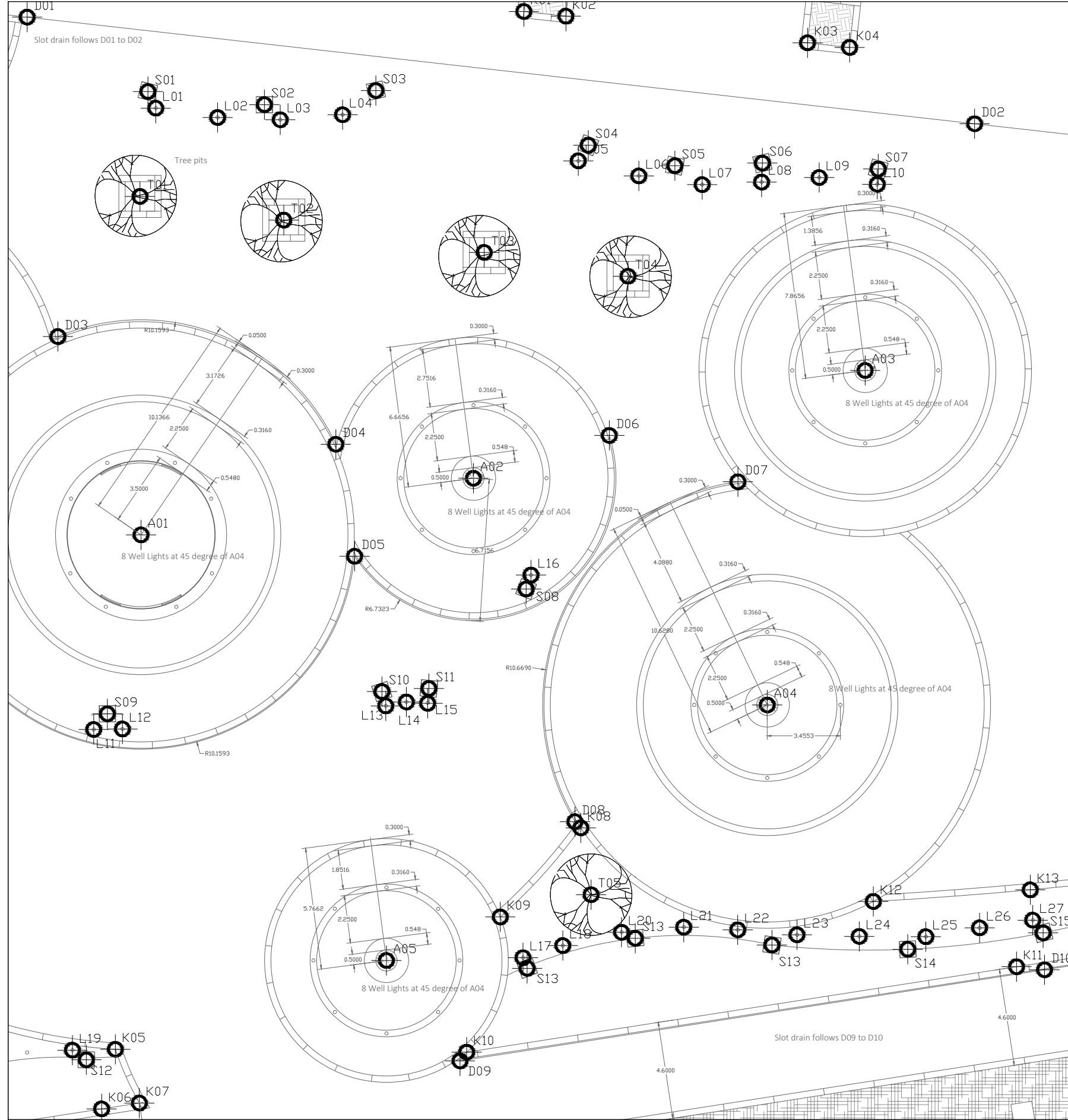
- CTB** Counter Terror Block - VED/0002
Material: Concrete
Manufacturer: Isonscape products
Dimensions: 1000x1000x90
Finish: Natural Round
Laying pattern: Placed where specified in GA.
Sub-base: 150mm compacted MOT Type 2 Substrate
- YP** Yorkstone paving
Material: Yorkstone
Manufacturer: Marshalls
Dimensions: 900 x 600 x 63mm
Finish: Sawn
Laying pattern: Stretcher
Joining: 8mm mortar jointing
Sub-base: 30mm 3:1 mortar bedding, 150mm reinforced concrete base, 200mm compacted MOT Type 1 aggregate
- SP** GEOWEB Slope Protection (W30V(mid cell))
Material: Perforated HDPE
Manufacturer: Presto Geosystems
Dimensions: 150mm Diameter
Finish: Black
Sub-base: 200mm reinforced concrete base
Laying pattern: Flat on Geotextile membrane, secured with anchor pins

- Bc** Solignum Landscaping Bark Chippings
Material: Mixed Conifer
Manufacturer: Robson
Dimensions: 30-40mm
Finish: High-pressure protected, zinc-plated steel oven-cured in Forge Black
Joining: Bolted to floor
Sub-base: 150mm reinforced concrete base, 200mm compacted MOT Type 1 aggregate
- SS** SOLANUM STEEL
Material: Steel
Manufacturer: A. Zahner Company
Dimensions: 30mm Cut to Engineer Spec
Finish: Pre-anodised weathered steel
Joining: Bolted to steel frame
- MP** Steel Metal Plate
Material: Mild Steel
Manufacturer: Patzer Steel
Dimensions: 750x750x80mm
Finish: Black
Sub-base: Consult Engineer

- Be** ESCORT TRAMET Bench
Material: Nordic Pine
Manufacturer: Marshalls
Dimensions: 200mm x 450mm x 420mm
Finish: High-pressure protected, zinc-plated steel oven-cured in Forge Black
Joining: Bolted to floor
Sub-base: 150mm reinforced concrete base, 200mm compacted MOT Type 1 aggregate
- YE** Yorkstone edging paving
Material: Yorkstone
Manufacturer: Marshalls
Dimensions: 100 x 100 x 63mm
Finish: Sawn
Laying pattern: Stalk
Joining: 8mm mortar jointing
Sub-base: 30mm 3:1 mortar bedding, 150mm reinforced concrete base, 200mm compacted MOT Type 1 aggregate
- RS** Radial Yorkstone
Material: Yorkstone
Manufacturer: Marshalls
Dimensions: 600mm (D) slabs around circumference (Specified by engineer)
Finish: Sawn
Laying pattern: Radial Stretcher
Joining: 8mm mortar jointing
Sub-base: 30mm 3:1 mortar bedding, 150mm reinforced concrete base, 200mm compacted MOT Type 1 aggregate

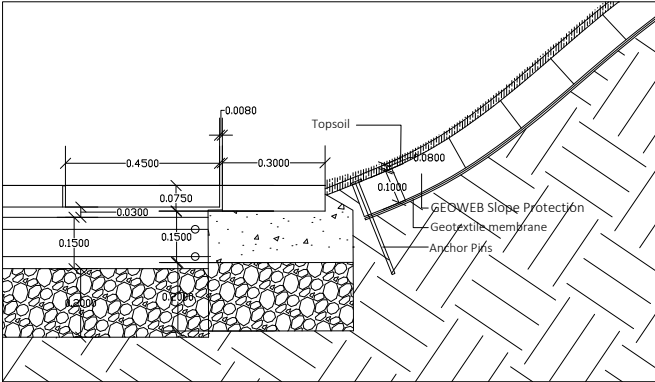
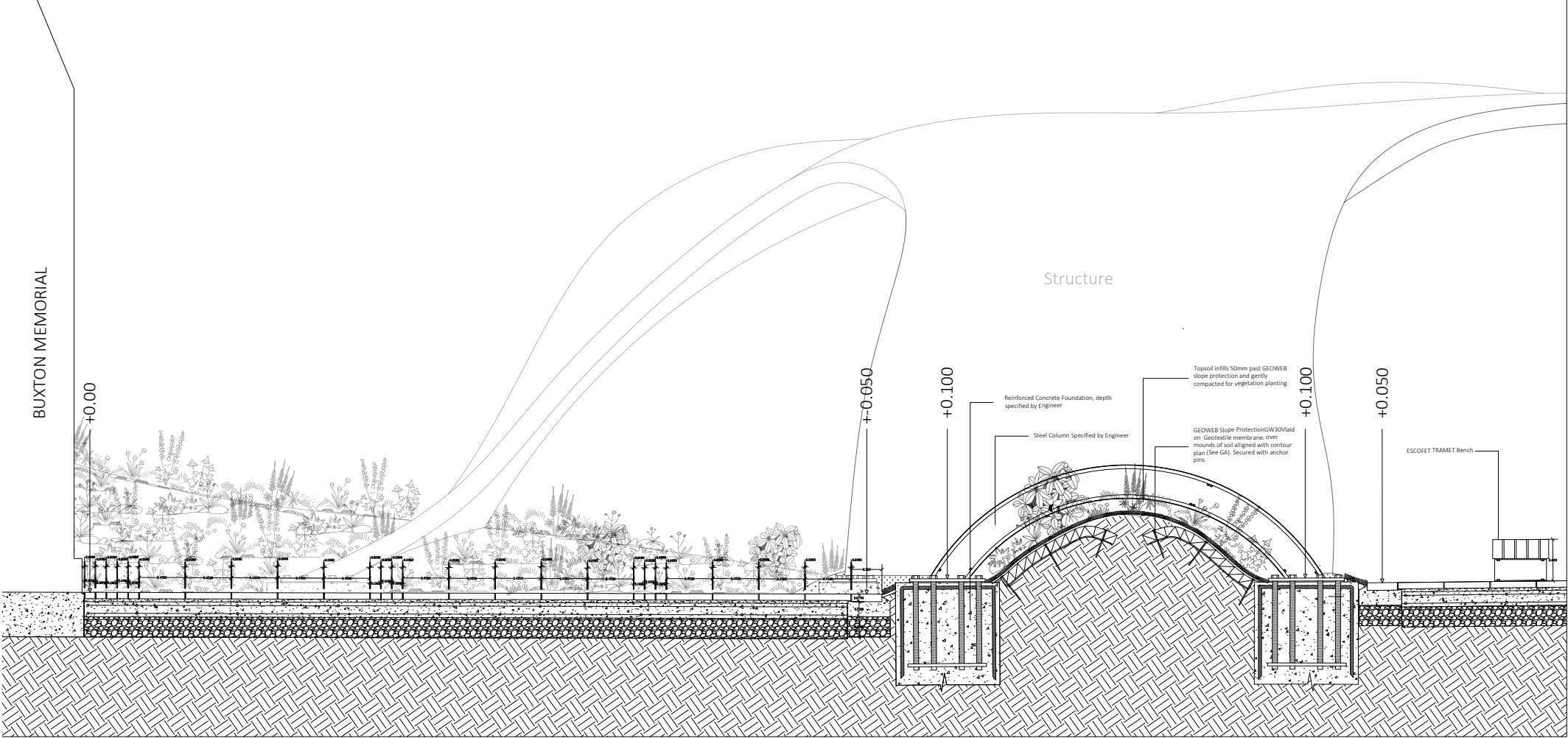
KEY

Building underground Outline	Mound Contours
Large Yorkstone	Metallic Spheres
Radial Yorkstone	Existing Vegetation
Yorkstone Edging	Anti terror block
Yorkstone Setts	Roof Structure Contour Heights
Planting Beds	Retractable Anti Terrorism Bollards
Solanum Steel Roof Structure	Metallic Sphere Foundation
Solanum Steel Roof Structure at Ground Level	GEOWEB Slope Protected Planting beds
Solanum Steel Roof Structure in Air	Bark Cover
Silver Birch Trees	Planting Bed
Soft Landscape Roof Structure Foundations (See Construction Detail pg.)	Planting Beds (Refer to Planting plan)
Paving surround Roof Structure Foundations (See Construction Detail pg.)	

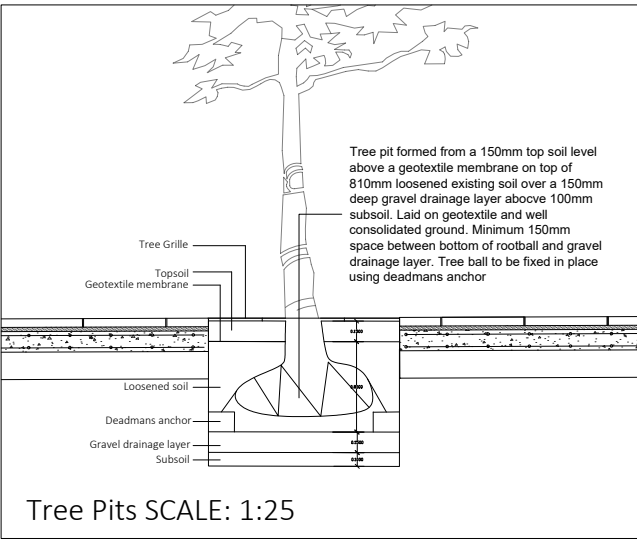


Radial paving Centres			Lighting Points		
SETTING/OUTPOINT	Position X	Position Y	SETTING/OUTPOINT	Position X	Position Y
A01	530299.8224	179142.2607	L01	530320.0237	179142.0785
A02	530302.9024	179126.6044	L02	530319.6570	179139.1417
A03	530308.4763	179108.2069	L03	530319.6288	179136.1789
A04	530292.5342	179112.4332	L04	530219.9387	179133.2355
A05	530279.9881	179130.1371	L05	530318.0423	179122.0294
			L06	530317.4028	179119.1486
			L07	530317.0682	179116.1409
			L08	530317.2611	179113.3338
			L09	530317.5461	179110.6141
			L10	530317.2936	179107.8588
			L11	530290.5597	179144.2641
			L12	530296.6178	179142.9045
			L13	530292.0283	179130.4777
			L14	530292.2393	179129.5065
			L15	530292.1996	179128.4986
			L16	530298.3946	179123.7650
			L17	530286.2844	179123.6801
			L18	530280.9055	179121.8141
			L19	530275.3641	179144.8814
			L20	530281.6074	179119.0507
			L21	530281.9209	179116.1151
			L22	530281.8608	179113.3568
			L23	530281.6978	179110.7486
			L24	530281.6978	179107.8013
			L25	530281.7633	179104.6509
			L26	530282.2496	179102.1192
			L27	530282.6746	179099.6151
			Kerb Edge Points		
SETTING/OUTPOINT	Position X	Position Y			
K01	530325.0395	179124.7825			
K02	530324.8715	179122.7902			
K03	530323.9052	179111.3277			
K04	530323.7371	179109.3344			
K05	530275.4569	179142.8535			
K06	530272.6212	179143.4293			
K07	530272.9440	179141.6531			
K08	530286.4939	179121.1037			
K09	530282.1844	179124.8056			
K10	530275.7469	179126.2306			
K11	530286.4551	179100.3236			
K12	530283.3672	179107.1768			
K13	530284.1075	179099.7666			
			Tree Points		
SETTING/OUTPOINT	Position X	Position Y			
T01	530315.8309	179142.7202			
T02	530314.8848	179135.8892			
T03	530313.5960	179126.3684			
T04	530312.4461	179119.5373			
T05	530283.3454	179120.5595			

Radial Paving and Grass surround Roof Structure Foundations SCALE: 1:25

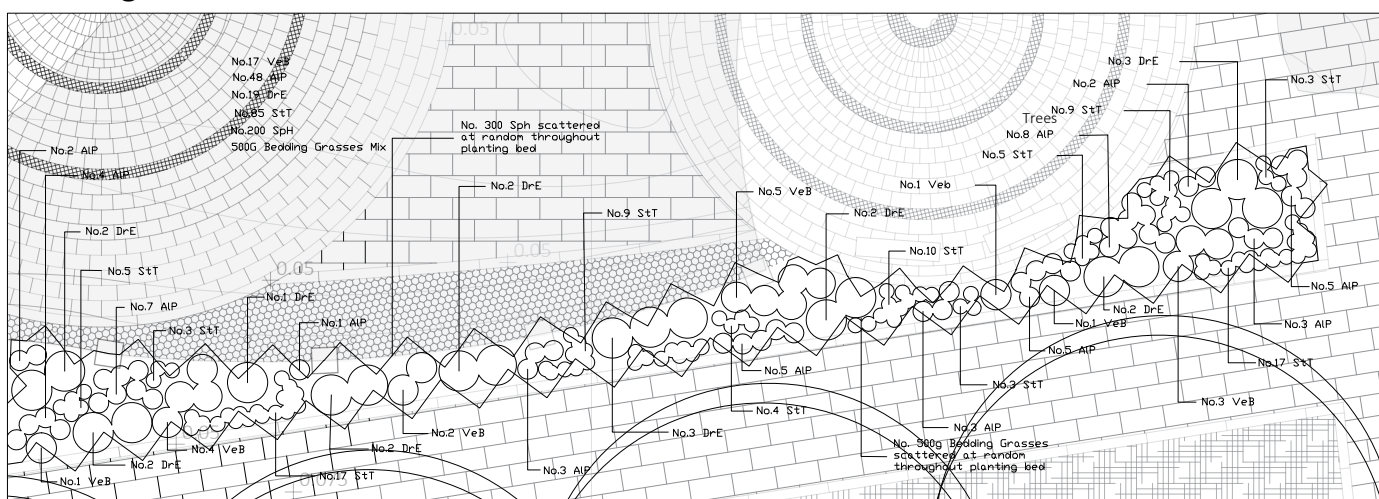


Yorkstone Edging and Slope Retention SCALE: 1:5

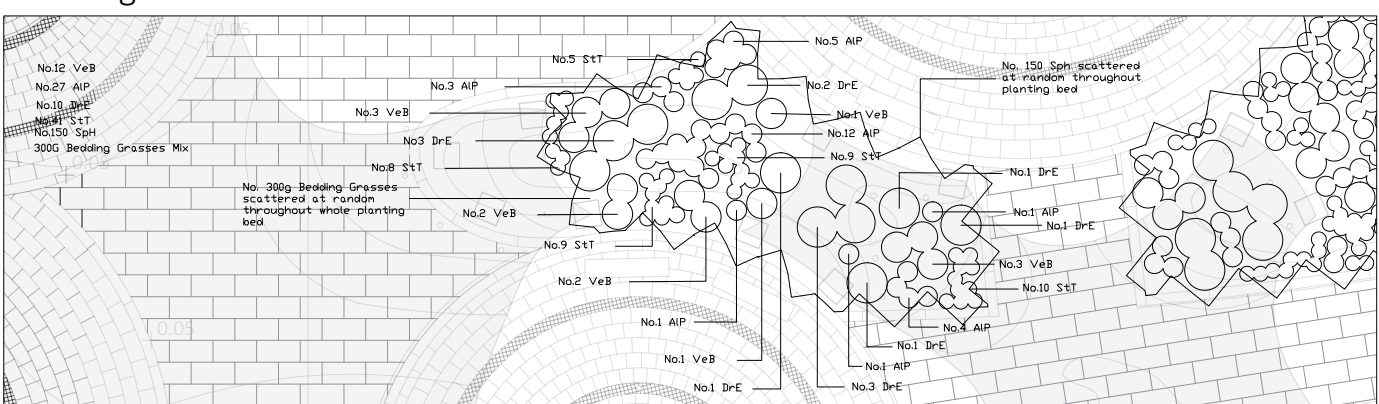


Tree Pits SCALE: 1:25

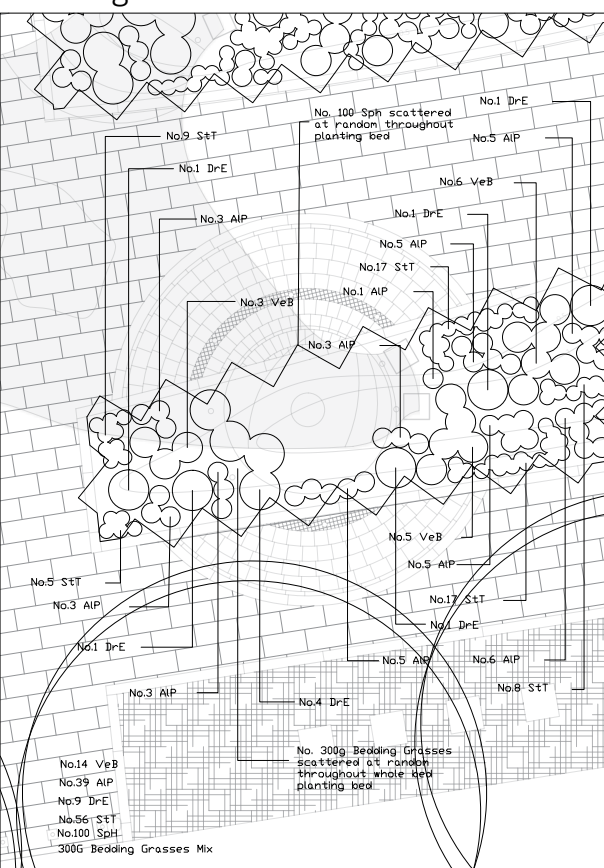
Planting Bed 1



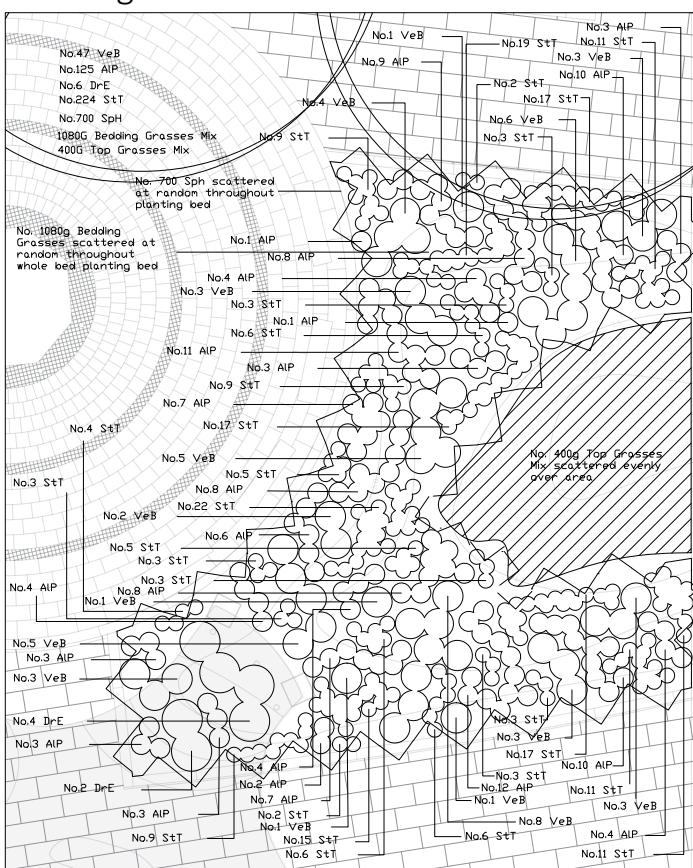
Planting Bed 2



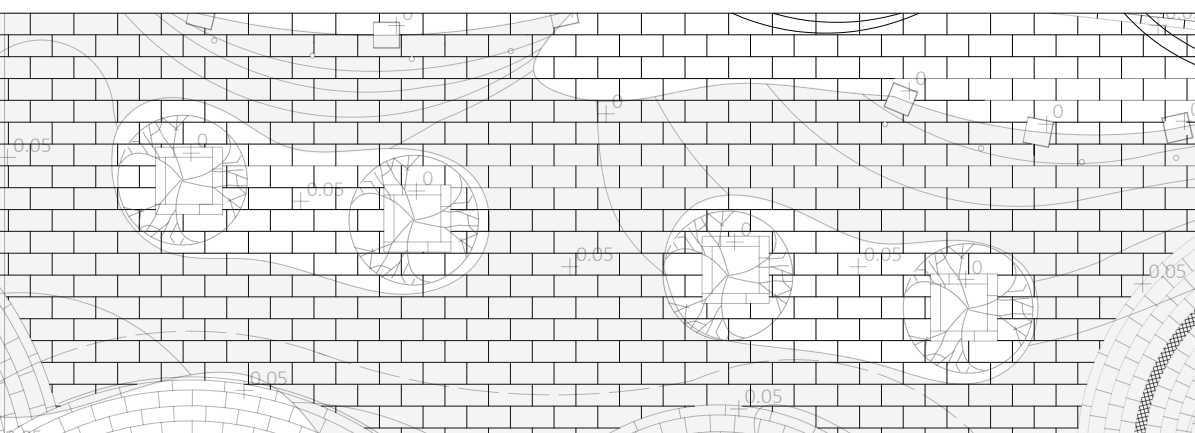
Planting Bed 3



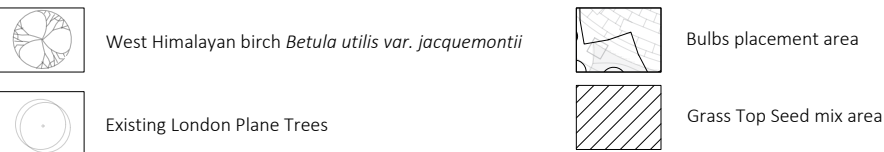
Planting Bed 4



Tree Pits



KEY



Trees

Abbreviation	Name	Habit	Spread	Height	Root	Pot Size (L)	Clear Stem (M)	Breaks	Supplier	Maintenance	Quantity
Bul	West Himalayan Birch <i>Betula utilis</i> var. <i>jacquemontii</i>	Bushy	N/A	5m	N/A	200L	3m	0	Santham	Prune branches interfering with structure	4

Perennials

Abbreviation	Name	Habit	Spread	Height	Root	Pot Size (L)	Supplier	Maintenance	Quantity
VeB	Purple Top Tulip <i>Adonis vernalis</i>	Bushy	60cm	60cm	N/A	9	Crocus	Cut down in spring as new growth emerges from the base	30

Grasses

Abbreviation	Name	Habit	Spread	Height	Root	Pot Size (L)	Supplier	Maintenance	Quantity
AI	Meadow Foxtail <i>Alopecurus pratensis</i>	Tufted	30cm	45cm	N/A	5	blumet	Cut back in spring for best foliage effect	239
DI	Copper chisel fern <i>Dryopteris</i>	Clump-forming	50cm	50cm	N/A	2	Dobbies	Dead or damaged fronds may be removed as necessary	44
ST	Mossy Heather <i>Erica tetralix</i>	Clump-forming	30cm	60cm	N/A	2	Nobbs botanic		400

Bulbs

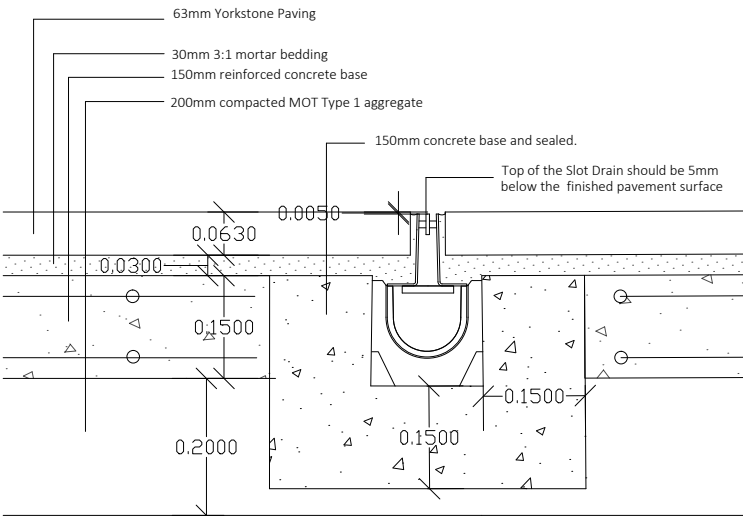
Abbreviation	Name	Habit	Height	Spread	Quantity
SpH	Alum <i>sphaeranthus</i>	Bushy	100cm	50cm	1150

Seed Mix

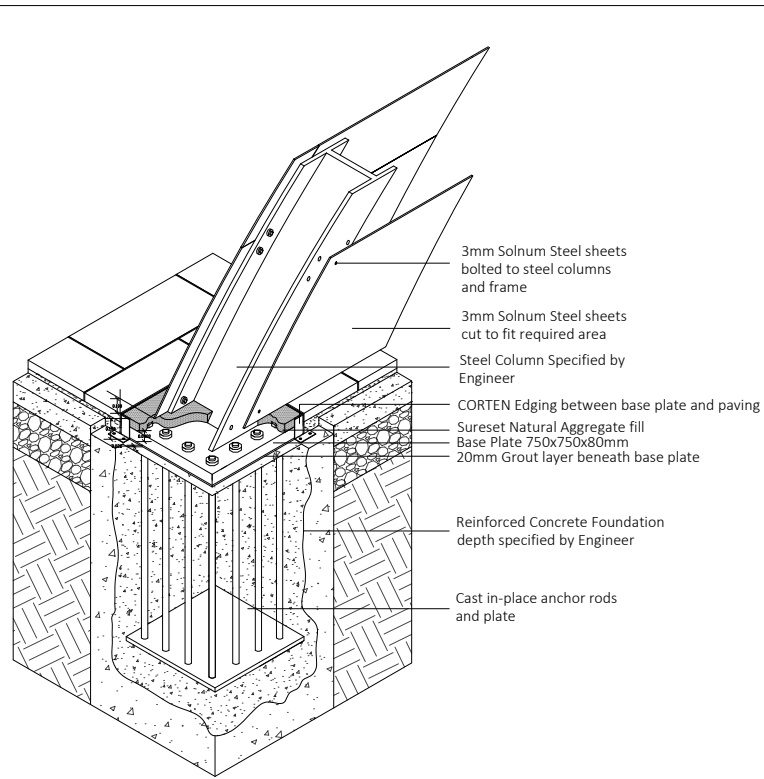
Seed Mix	Abbreviation	Name	Percentage	G per SqM	Quantity
Bedding Grasses	LEV	Chenopodium <i>leucanthemum</i>	33	2	65
	LAD	Hardy tall grass <i>Lolium perenne</i>	33	2	65
	BRM	Quaking Grass <i>Bromus inermis</i>	33	2	65
Top Grass	CYC	Crested Dogtail Grass <i>Cynodon dactylon</i>	100	30	400

PLANTING-PLAN

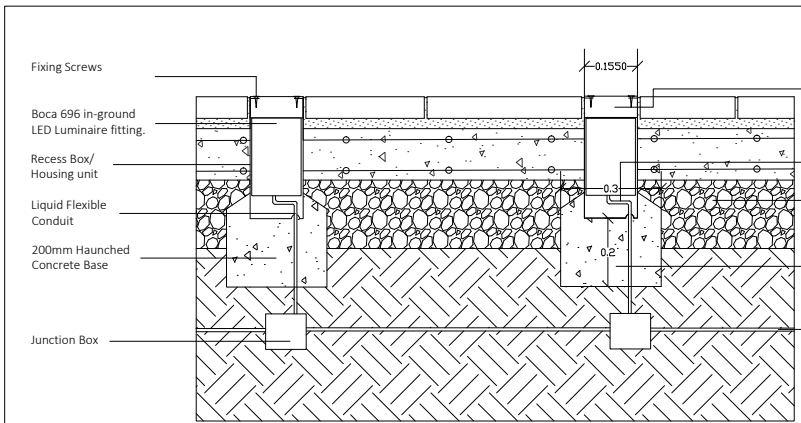
SITE:	VICTORIA-TOWER-GARDENS
TITLE:	CENTRE-OF-HUMANKIND
SCALE AT A1:	VARIES
DATE:	30/05/2019
Module No:	AD6404
Name:	MARTIN-DONNELLY



Slot Drain SCALE: 1:5



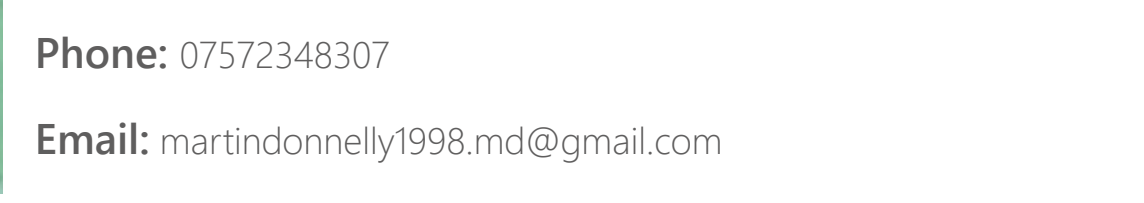
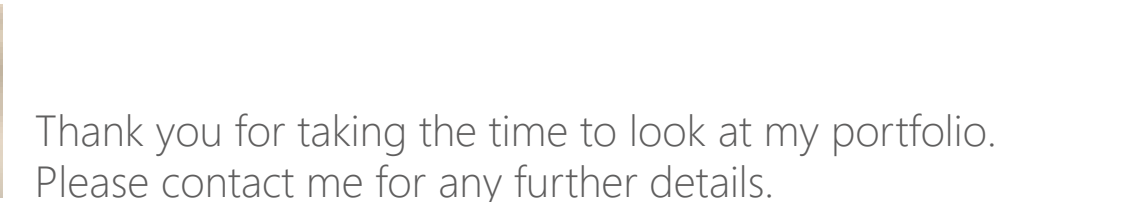
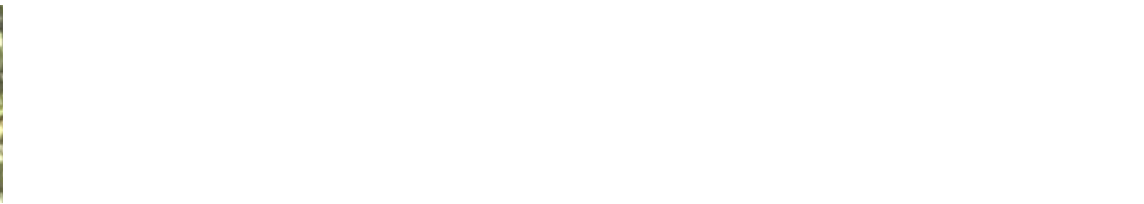
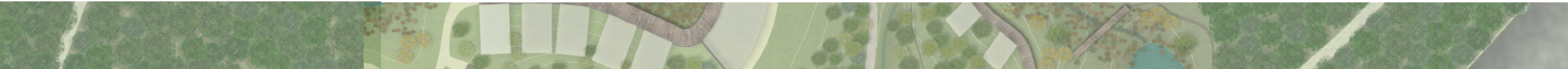
Paving surround Roof Structure Foundations SCALE: 1:25



Well Lights SCALE: 1:10

CONSTRUCTION-DETAILS

SITE:	VICTORIA-TOWER-GARDENS
TITLE:	CENTRE-OF-HUMANKIND
SCALE AT A1:	VARIES
DATE:	30/05/2019
Module No:	AD6404
Name:	MARTIN-DONNELLY



Thank you for taking the time to look at my portfolio.
Please contact me for any further details.

Phone: 07572348307

Email: martindonnelly1998.md@gmail.com

